

# WiFi Smart Camera

## Quick operation manual

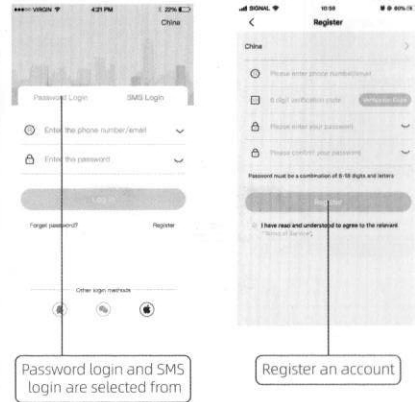
\*Please read the quick operation manual carefully and keep it properly



Scan QR code to download app

### Get started

- Scan the outer QR code to download and install APP
- Register the account number with the mobile phone number and set the password, and log in to APP. with the registered account number and password

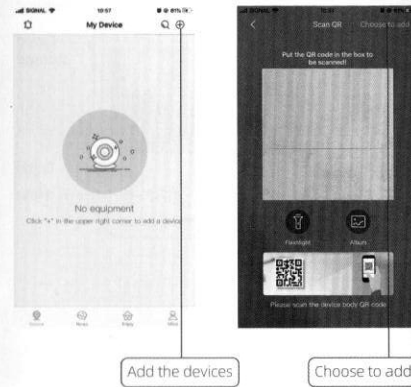


Password login and SMS login are selected from

Register an account

### QR code scanning connection

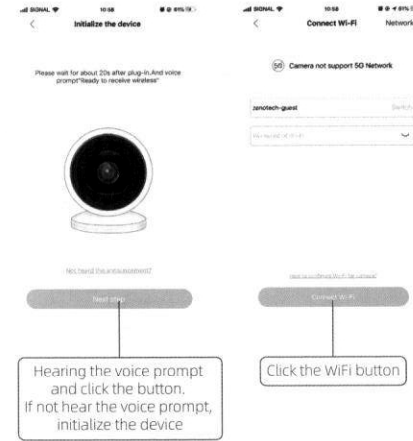
- The camera is powered on and after waiting for about 30 seconds, broadcasting "waiting to receive wireless network information"
- Select "+" at the APP device list interface, and scan the QR code of the fuselage using the mobile phone camera (if you cannot scan the QR code, click "Select Add" in the top right corner, and click "WiFi Camera")



Add the devices

Choose to add

- On the APP side, select the WiFi network that the camera needs to connect (2.4GHz only) according to the page guidance, enter the WiFi password and go to "Next"



Hearing the voice prompt and click the button. If not hear the voice prompt, initialize the device

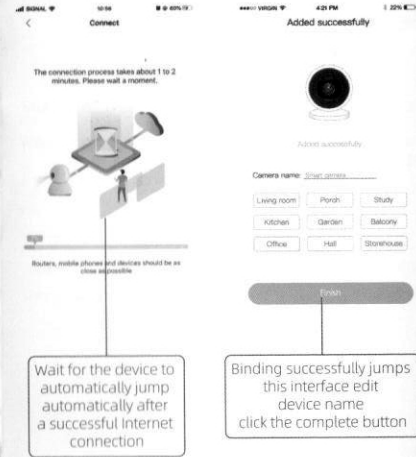
Click the WiFi button

- The QR code of the distribution network will be generated in the APP interface of the mobile phone
- Scan the QR code at the camera lens from about 15~20cm, camera



Click on the button after hearing the voice

- Waiting for the camera voice broadcast "device is connected to the Internet", the configuration is successful

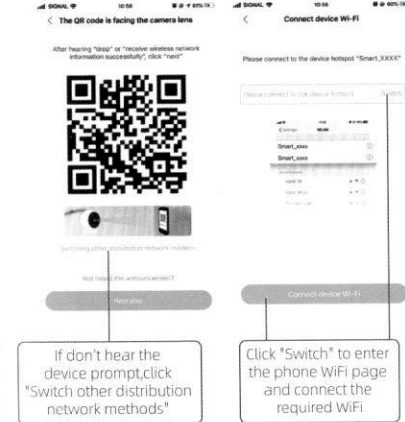


Wait for the device to automatically jump automatically after a successful Internet connection

Binding successfully jumps this interface edit device name click the complete button

### The AP connection is made

- click "Select other distribution network methods" to enter the AP connection distribution network
- Click "Switch", select the name format "Smart\_xxxx" (this step disconnects the original WiFi) and return to the previous interface



If don't hear the device prompt,click "Switch other distribution network methods"

Click "Switch" to enter the phone WiFi page and connect the required WiFi